

D191 Brass Ball Valve D191EXS Brass Ball Valve with Extension stem

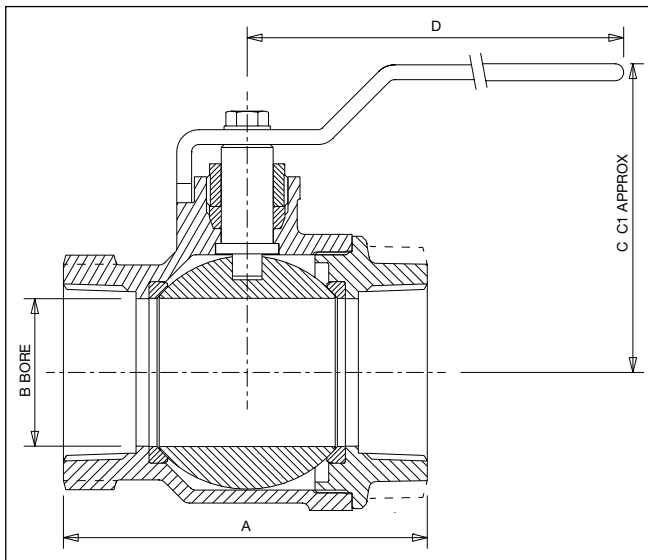
Crane D191 Ball valves are light, compact units which are easy to install and operate, yet their robust construction ensures long, trouble free service life.
Sizes 1/4" to 2" have the added advantage of British Gas Approval.

Materials

Part	Material	Sizes
Body	Brass BS EN 12165 CW617N(Nickel Plated)	All
Seat Retainer	Brass BS EN 12165 CW617N(Nickel Plated)	All
Ball	Brass BS EN 1982 CW617N(Chrome Plated)	All
Seat	PTFE	All
Stem	Brass BS EN 12164 CW617N	All
Packing	PTFE	All
Gland Nut	Brass BS EN 12164 CW617N	All
Lever	Mild Steel	All
Lever Screw	Steel	All
Lever Cover	PVC	All
Extension Housing	Aluminium	D191EXS
Extension Stem	Brass BSEN12164 CW617N	D191EXS



Dimensional Drawing



Dimensions and Weights

Size	Weight (kg)	A (mm)	B (mm)	C (mm) D191	C1 (mm) D191EXS	D (mm)
1/4"	0.13	48	10	37	-	80
3/8"	0.13	48	10	37	-	80
1/2"	0.25	56	13	39	82	80
3/4"	0.35	67	20	57	97	90
1"	0.59	77	25	65	115	125
1.1/4"	0.89	92	32	71	123	125
1.1/2"	1.34	103	40	79	139	140
2"	2.04	122	50	87	146	140
2.1/2"	3.96	153	65	112	-	200
3"	5.89	179	80	123	-	280
4"	9.35	212	100	142	-	280

Pressure Rating: PN25

UK End Connection: BSEN10226 formerly BS21 Taper

US End Connection: ANSI B1.20.1

Operator: Lever.

Specification:

End Entry, Quarter Turn, Tight Shut-Off

PTFE seats and stem seal

Not suitable for use on unstable fluids as defined by the Pressure Equipment Directive 97/23/EC.

Temperature operating range: -10 to 186°C.