

D116

Bronze Lift Check Valve

D116

PN32



GENERAL VALVES

Features & Benefits

- Lift Check Valves should only be used in horizontal pipe runs
- The Crane D116 check valve is of the lift check variety

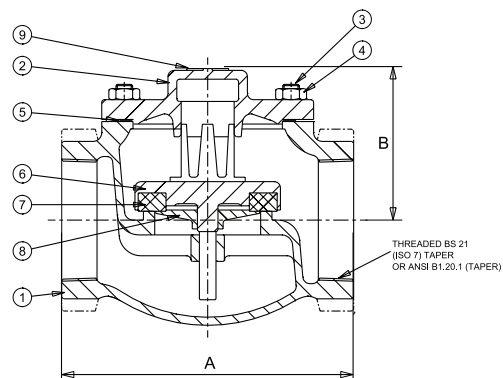
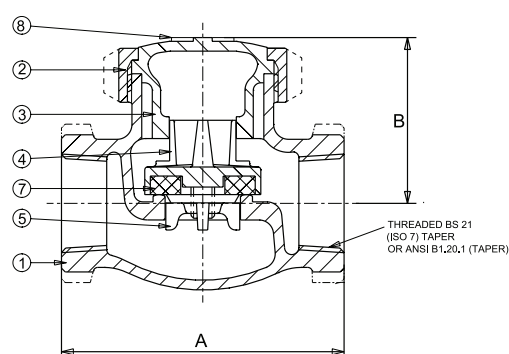
Materials

NO.	PART	MATERIAL	SIZES
1	Body	Bronze BS EN 1982 CC491K	All
2	Union Ring Bronze	BS EN 1982 CC491K	1/4 - 2
3	Cap Bronze	BS EN 1982 CC491K	All
4	Cap Studs Steel	BS 970 070M20	2 1/2 & 3
5	Cap Stud Nuts Steel	BS 4190 Gr.4.0	2 1/2 & 3
6	Disc Holder Bronze	BS EN 1982 CC491K	All
7	Disc Retaining Nut Bronze	BS EN 1982 CC491K	1/2 - 3
7	Disc Retaining Nut Brass	BS EN 12164 CW614N	1/4 & 3/8
8	Washer Brass	BS EN 12164 CW614N	1/4 & 3/8
9	Disc	PTFE (25% Glass Filled)	All
10	Gasket	Asbestos Free	2 1/2 & 3
11	ID Plate	Aluminium	All

Dimensions & Weights

SIZE (inch)	WEIGHT (kg)	A (mm)	B (mm)
1/2	0.37	59	37
3/8	0.36	59	37
1/2	0.51	68	43
3/4	0.85	81	49
1	1.32	95	56
1 1/4	1.97	108	65
1 1/2	2.65	121	73
2	4.44	146	87
2 1/2	9	184	94
3	13.6	210	107

Dimensional Drawing



Pressure/Temperature Ratings

TEMPERATURE (°C)	-10 to 100	198
PRESSURE (BAR)	32	14

Intermediate pressure ratings shall be determined by interpolation.

PRESSURE RATING: PN32

TEMPERATURE OPERATING RANGE: -10 to 198°C

UK END CONNECTION: BS 21 Taper

US END CONNECTION: ANSI B1.20.1

OPERATOR: Lift Check Valve

SPECIFICATION: Valves are manufactured in accordance with BS 5154 PN32

for Series B ratings. The design incorporates a disc holder which is guided in the seat bore and the cap. The body seat is integral of the semi-crown type. Sizes 1/4" to 2" have a union cap; sizes 2 1/2" and 3" have a bolted cap.

This check valve is available with a nitrile rubber disc for air, hot and cold water. This valve is not suitable for use on Group 1 gases or unstable fluids, as defined by the Pressure Equipment Directive 2014/68/EU.*

* See page 155 for more information