

D237

Bronze Gate Valve with Lockshield Non rising stem



PN20

D237



GENERAL VALVES

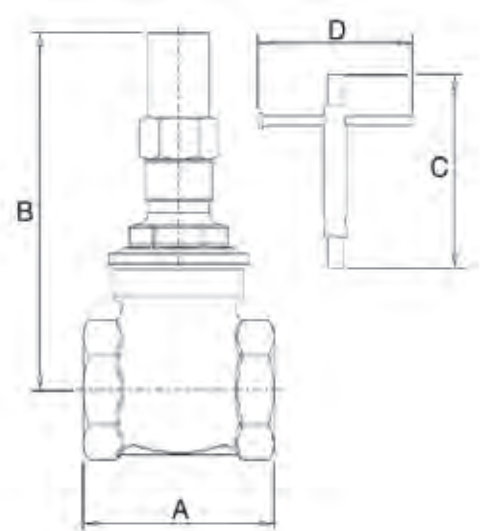
Features & Benefits

- Crane gate valves offer the ultimate in dependable service wherever minimum pressure drop is important.
- The D237 carries the British Standards Institution Kitemark - your assurance of exacting quality standards
- WRAS approved for use on wholesome (potable) water in sizes 1/2" - 2" only
- WRAS approval temperature 85°C max

Materials

PART	MATERIAL	SIZES
Body	Bronze BS EN 1982 CC491K	1/2 - 3
Bonnet	Bronze BS EN 1982 CC491K	1/2 - 3
Disc	Bronze BS EN 1982 CC491K	1/2 - 3
Stem	DZR Brass BS EN 12164 CW602N	1/2 - 3
Stuffing Box	DZR Brass BS EN 12164 CW602N	2 1/2 & 3
Stem Retainer	DZR Brass BS EN 12164 CW602N	1/2 - 2
Gland	Brass BS EN 12164 CW614N	1 - 3
Packing	Asbestos Free	1/2 - 3
Lockshield	Brass BS EN 12164 CW614N	1/2 - 3
Box Spanner	Mild Steel	1/2 - 3

Dimensional Drawing



Dimensions & Weights

SIZE (inch)	WEIGHT (kg)	A (mm)	B (mm)	C (mm)	D (mm)
1/2	0.276	50	78	90	100
3/4	0.389	54	87	90	100
1	0.593	62	106	125	100
1 1/4	0.831	71	116	125	100
1 1/2	1.248	77.5	132	125	100
2	1.882	87.5	156	125	100
2 1/2	4.15	96	218	-	-
3	6.24	105	253	-	-

Pressure/Temperature Ratings

TEMPERATURE (°C)	-10 to 100	180
PRESSURE (BAR)	20	9

Intermediate pressure ratings shall be determined by interpolation.

PRESSURE RATING: PN20

TEMPERATURE OPERATING RANGE:
-10 to 180°C

END CONNECTION: Taper threaded to BS EN 10226-2 (ISO 7-1) formerly BS 21

OPERATOR: Lockshield.

Gate valves are best for services that require infrequent valve operation, and where the disc is kept either fully opened or fully closed. They are not practical for throttling.

SPECIFICATION: Solid wedge disc, non-rising stem, screwed in bonnet. Valves are manufactured in accordance with BS EN 12288: 2010 PN20 Series B and are BSI Kitemark approved.

This valve is not suitable for use on group 1 gases or unstable fluids, as defined by the Pressure Equipment Directive 2014/68/EU.*

AVAILABLE OPTIONS: P103 lockshield key 1/2" - 2" P100 lockshield key 2 1/2" - 3"

* See page 155 for more information