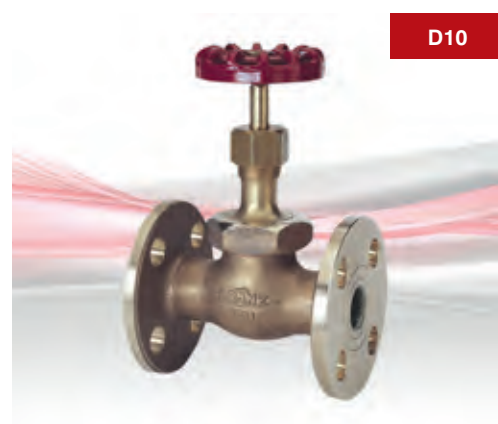


# D10

## Bronze Globe Valve

Class 150



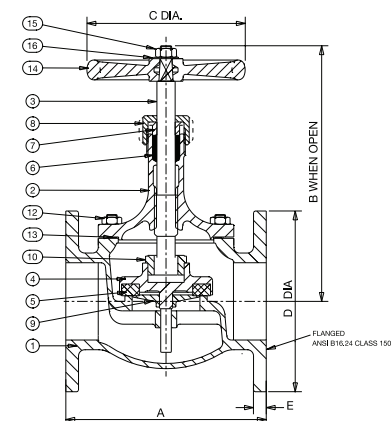
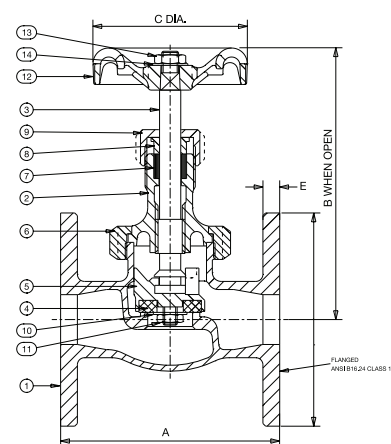
### Features & Benefits

- Crane bronze globe valves are highly efficient for throttling because seat and disc designs provide flow characteristics with proportionate relationships between valve lift and flow rate

### Materials

| NO. | PART            | MATERIAL                             | SIZES   |
|-----|-----------------|--------------------------------------|---|
| 1   | Body            | Bronze BS EN 1982 CC491K             | All   |
| 2   | Bonnet          | Bronze BS EN 1982 CC491K             | All   |
| 3   | Stem            | Bronze BS EN 1982 CC491K             | All   |
| 4   | Disc            | PTFE (25% Glass Filled)              | All   |
| 5   | Disc Holder     | Bronze BS EN 1982 CC491K             | 1 <sup>1</sup> / <sub>4</sub> - 3                             |
| 5   | Disc Holder     | Brass BS EN 12165 CW617N             | 1 <sup>1</sup> / <sub>2</sub> - 1                             |
| 6   | Union Ring      | Bronze BS EN 1982 CC491K             | 1 <sup>1</sup> / <sub>2</sub> - 2                             |
| 7   | Packing         | Asbestos Free                        | All   |
| 8   | Gland           | Brass BS EN 12164 CW614N             | All   |
| 9   | Packing Nut     | Brass BS EN 12164 CW614N             | 1 <sup>1</sup> / <sub>2</sub> - 1 <sup>1</sup> / <sub>2</sub> |
| 9   | Packing Nut     | Bronze BS EN 1982 CC491K             | 2 - 3   |
| 10  | Washer          | Brass BS EN 12164 CW614N             | 1 <sup>1</sup> / <sub>2</sub> - 2                             |
| 11  | Disc Ret'ng Nut | Brass BS EN 12164 CW614N             | 1 <sup>1</sup> / <sub>2</sub> - 2                             |
| 11  | Disc Ret'ng Nut | Bronze BS EN 1982 CC491K             | 2 <sup>1</sup> / <sub>2</sub> & 3                             |
| 12  | Handwheel       | Aluminium                            | 1 <sup>1</sup> / <sub>2</sub> - 2                             |
| 12  | Handwheel       | Malleable Iron BS EN 1562 GJMB-300-6 | 2 <sup>1</sup> / <sub>2</sub> & 3                             |
| 13  | Handwheel Nut   | Brass BS EN 12164 CW614N             | All   |
| 14  | ID Plate        | Aluminium                            | All   |
| 15  | Disc Stem Ring  | Bronze BS EN 1982 CC491K             | 2 <sup>1</sup> / <sub>2</sub> & 3                             |
| 16  | Bonnet Stud     | Steel BS 970 070M20                  | 2 <sup>1</sup> / <sub>2</sub> & 3                             |
| 17  | Bonnet Stud Nut | Steel BS 4190 Gr.4                   | 2 <sup>1</sup> / <sub>2</sub> & 3                             |
| 18  | Gasket          | Asbestos Free                        | 2 <sup>1</sup> / <sub>2</sub> & 3                             |

### Dimensional Drawing



### Dimensions & Weights

| SIZE (mm)                     | WEIGHT (kg) | A (mm) | B (mm) | C (mm) | D (mm) | E (mm) |
|-------------------------------|-------------|--------|--------|--------|--------|--------|
| 1/2                           | 1.76        | 108    | 128    | 65     | 89     | 8      |
| 3/4                           | 1.95        | 117    | 145    | 70     | 98     | 9      |
| 1                             | 3.2         | 127    | 161    | 78     | 108    | 10     |
| 1 <sup>1</sup> / <sub>4</sub> | 4.54        | 146    | 180    | 92     | 118    | 10     |
| 1 <sup>1</sup> / <sub>2</sub> | 6.12        | 159    | 199    | 103    | 127    | 11     |
| 2                             | 8.67        | 190    | 233    | 121    | 152    | 13     |
| 2 <sup>1</sup> / <sub>2</sub> | 14.9        | 216    | 279    | 152    | 178    | 14     |
| 3                             | 20.1        | 254    | 313    | 152    | 191    | 16     |

**PRESSURE RATING:** Class 150

**TEMPERATURE OPERATING RANGE:** -10 to 186°C

**UK END CONNECTION:** Not Specified

**US END CONNECTION:** Flanged Class 150

**OPERATOR:** Handwheel

**AVAILABLE OPTOINS:** Flanges Undrilled.

P150 Locking Device

**SPECIFICATION:** Valves are manufactured in accordance with BS 5154 for Class 150 Series B ratings.

Design incorporates a disc holder retained on a stem by a threaded ring. Body seat is integral of the semi-crown type. Sizes 1/2" to 2" have a union bonnet; sizes 2 1/2" and 3" have a bolted bonnet. End flanges conform to BS 1560 Section 3.3 and ANSI B16.24 Class 150 with flat face and are normally supplied drilled. Valves have BS 5154 'long' face-to-face.

Valves also generally conform to MSS SP-80.

This valve is not suitable for use on group 1 gases or unstable fluids, as defined by the Pressure Equipment Directive 2014/68/EU.\*

\* See page 155 for more information

Valid as of 290719

Every effort has been made to ensure that the information contained in this publication is accurate at the time of publishing. Crane Ltd assumes no responsibility or liability for typographical errors or omissions or for any misinterpretation of the information within the publication and reserves the right to change without notice.